

400S/460SJ

MID-SIZE TELESCOPIC BOOM LIFTS



- Mid-size diesel telescopic boom lifts
- Available with and without a jib boom
- 4 wheel drive for excellent rough terrain performance
- Simple to operate and maintain
- Ideal for construction and industrial applications

 **snorkel**[™]
www.snorkellifts.com

MID-SIZE TELESCOPIC BOOM LIFTS

400S/460SJ

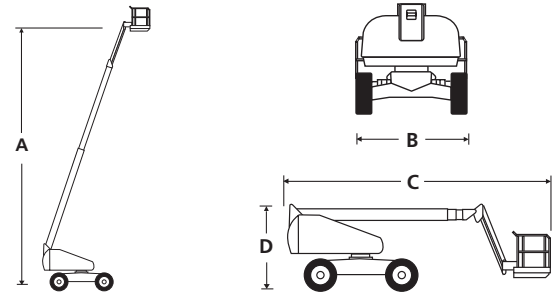
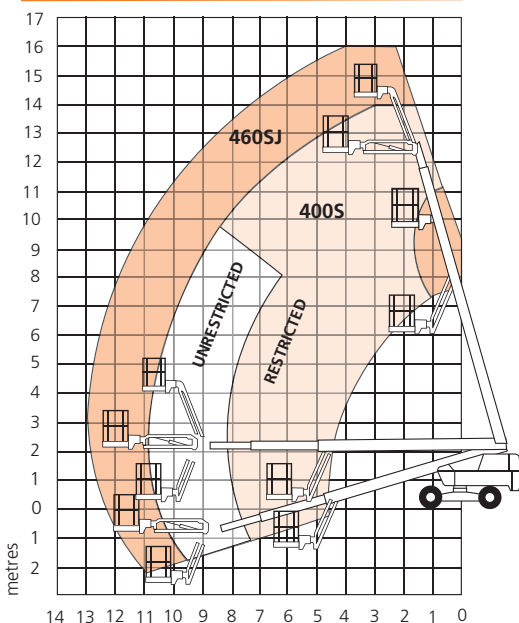
| DIMENSIONS | 400S | 460SJ |
|--------------------------|---------------|---------------|
| Max. working height | 14.2m | 16.0m |
| Max. platform height (A) | 12.2m | 14.0m |
| Max. working outreach | 10.1m | 12.8m |
| Platform size | 2.44m x 0.91m | 2.44m x 0.91m |
| Overall width (B) | 2.31m | 2.31m |
| Transport width | 2.08m | 2.08m |
| Overall length (C) | 7.57m | 8.76m |
| Transport length | 7.57m | 6.55m |
| Stowed height (D) | 2.38m | 2.38m |
| Transport height | 2.38m | 3.07m |
| Ground clearance | 317mm | 317mm |

| PERFORMANCE | | |
|--------------------------------------|--|------------------|
| Platform capacity (SWL) unrestricted | 272kg | 272kg |
| Platform capacity (SWL) restricted | 454kg | n/a |
| Max. drive height | 12.2m | 14.0m |
| Max. wind speed | 12.5m/s | 12.5m/s |
| Max. drive speed (stowed) | 6.4km/h | 6.4km/h |
| Max. drive speed (elevated) | 1.2km/h | 1.2km/h |
| Jib length | n/a | 2.0m |
| Jib arc | n/a | 135° (+70°/-65°) |
| Platform rotation | 150° | 150° |
| Turret rotation (continuous) | 360° | 360° |
| Tailswing | 0.9m | 0.9m |
| Raise/lower time | 64/64 sec | 64/64 sec |
| Gradeability | 50% | 50% |
| Inside turning radius | 3.0m | 3.0m |
| Outside turning radius | 5.06m | 5.06m |
| Tyres | 355/55 D625 foam filled lug | |
| Controls | Proportional drive, raise, slew, extend, jib & platform rotate | |
| Drive system | 4 wheel drive | |

| POWER | | |
|----------------------|--|--------|
| Power source | Deutz 2.9L (36.5kW) diesel 49 hp - Stage V | |
| Auxillary power unit | 12V DC | 12V DC |

| WEIGHT | | |
|--------|---------|---------|
| Weight | 7,135kg | 7,829kg |

WORKING ENVELOPE



STANDARD FEATURES

- Snorkel Guard™ secondary guarding system
- 2.0m 135° jib (460SJ)
- Oscillating axle
- Hydraulic platform rotation
- Four wheel drive
- All proportional controls
- Swing-out engine tray
- Motion alarm
- Hydraulic oil cooler
- Hour meter & on-board diagnostics display
- Power line to platform
- Tilt alarm & cut-out
- DC emergency operation
- Tri-entry platform
- Flashing amber light
- 2 year parts & labour, 5 year structural warranty
- CE approved

OPTIONS

- Special paint colours
- Airline to platform
- Non-marking tyres
- Dual fuel
- Kubota 24.9hp engine option
- AC generator 110V/240V 2kW
- Aircraft package
- Deluxe aircraft package
- Cold weather package
- Extreme cold weather package
- Extreme environment package
- Light package
- Tow kit
- Glazier package
- 10kW generator package
- 10kW generator/welder package
- Environmental hydraulic oil
- Tool tray



Vigo Centre, Birtley Road,
Washington, Tyne & Wear,
NE38 9DA, U.K.

t: +44 (0) 845 1550 057

e: sales.emea@snorkellifts.com

www.snorkellifts.com