

Winlet
1000

Crawler
Bi-Leveling



Pat. Pending

**CRAWLED CARRIER >> ALL TERRAIN MANEUVERABLE >> DYNAMIC LEVELLING OF MANIPULATOR >>
EXTREME STABILITY >> MORE SAFETY >> SATISFIED EMPLOYEES >> FASTER INSTALLATION**

Winlet Crawler Bi-Leveling is a "state-of-the-art" machinery distinguish by being all terrain maneuverable as well as having dynamic levelling of the complete manipulator on both horizontal axis. It's designed to start where all other glasslifters must give up!

WWW.WINLET.DK



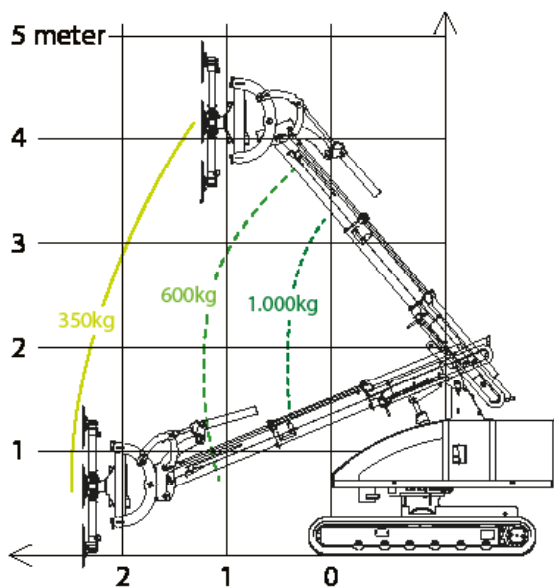
CRAWLED TRACTION AND LOW GROUND PRESSURE

Winlet Crawler Bi-Leveling can operate on all different type of terrain, on stairs etc., ensuring the maximum maneuverability and precision even in the narrowest spaces, with the minimum ground pressure - and without any kind of outriggers needed at any time.

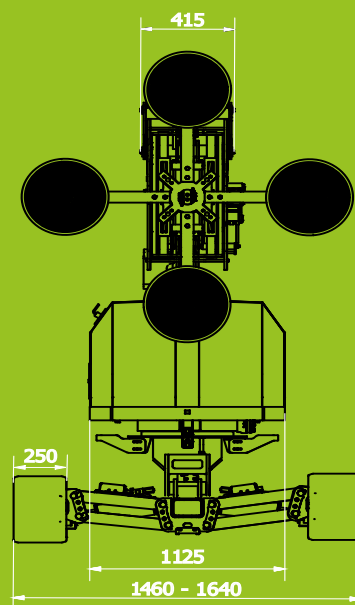
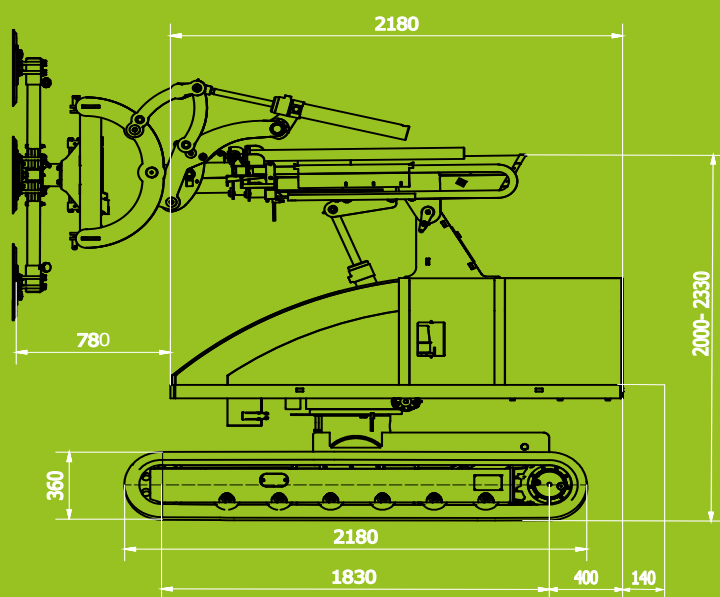
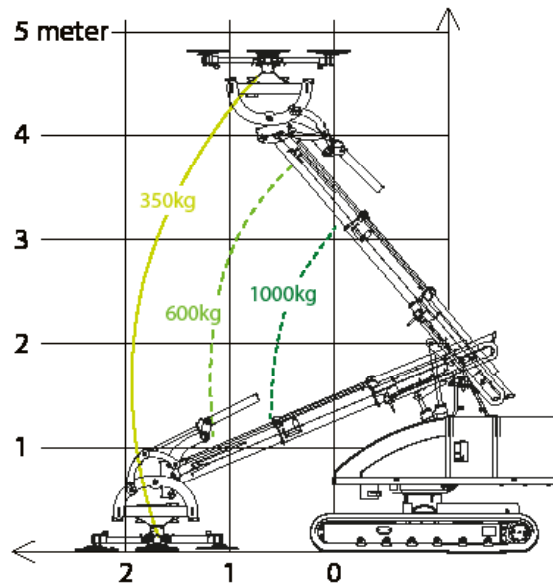
DYNAMIC LEVELLING

The levelling of the manipulator is completely automatic when using the Dynamic Levelling System even on slopes or uneven surfaces. Winlet Crawler Bi-Leveling will automatically adjust both on longitudinal slopes until 15° (27%) and lateral slopes until 14° (25%) at the same time, always ensuring a safe and effective transportation or installation.

REACH DIAGRAM

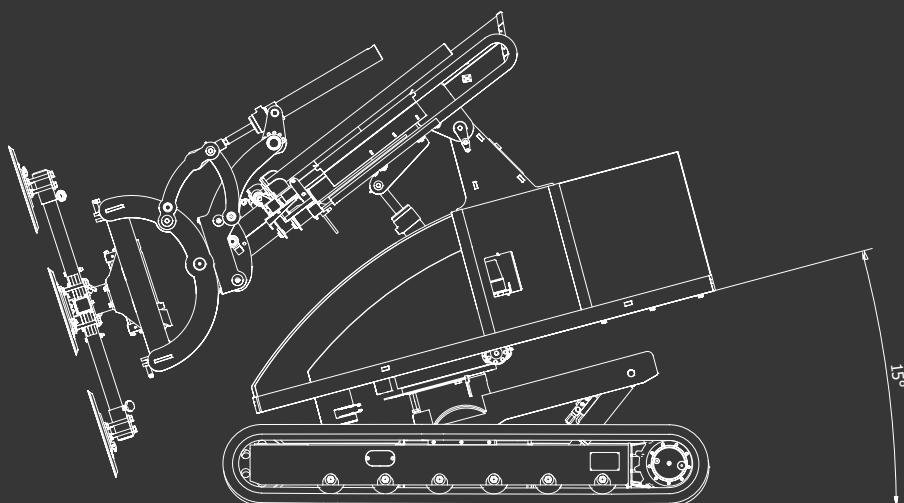


PICKUP AND PLACE DIAGRAM



SPECIFICATIONS

EXTERNAL LENGTH	2.830 MM
EXTERNAL WIDTH	1.460 - 1.640 MM
MAX. LIFTING CAPACITY	1.000 KG
MAX. LIFTING HEIGHT - Raised carrier	4.500 MM
MAX. LIFTING HEIGHT - Lowered carrier	4.170 MM
MAX. OVERHEAD INSTALLATION	
Raised carrier	5.100 MM
MAX. OVERHEAD INSTALLATION	
Lowered carrier	4.770 MM
MAX. REACH - No tilt on carrier	2.200 MM
MAX. REACH - Carrier tilted forward	2.600 MM
MAX. SPEED	2,20 KM/H
TOTAL WEIGHT	2.850 KG
BATTERIES	48V, 420AH



Dealer:

GMV A/S (SOUTH)
INDUSTRIPARKEN 1
DK - 7182 BREDSTEN

GMV A/S (NORTH)
INDUSTRIVEJ 10
DK - 7620 LEMVIG

TEL +45 7573 8247
CVR DK 21801283
WWW.GMVAS.DK
WWW.WINLET.DK
WWW.ERGOMOVER.DK

GMV
Cranes and Handling

GMV A/S - v2