

SR1745

ROUGH TERRAIN TELEHANDLER



- Full-time 4 wheel drive
- Fully enclosed cab
- Power assisted steering
- Proportional joystick
- Simple to operate & maintain

 **snorkel**™
www.snorkellifts.com

ROUGH TERRAIN TELEHANDLER

SR1745

CAPABILITIES SR1745

Max. lift capacity	4,535kg
Max. lift height (A)	16.4m
Max. forward reach	12.6m

DIMENSIONS

Overall width (B)	2.3m
Stowed height (C)	2.56m
Length to fork face (D)	6.6m
Wheelbase	2.95m
Ground clearance	350mm

PERFORMANCE

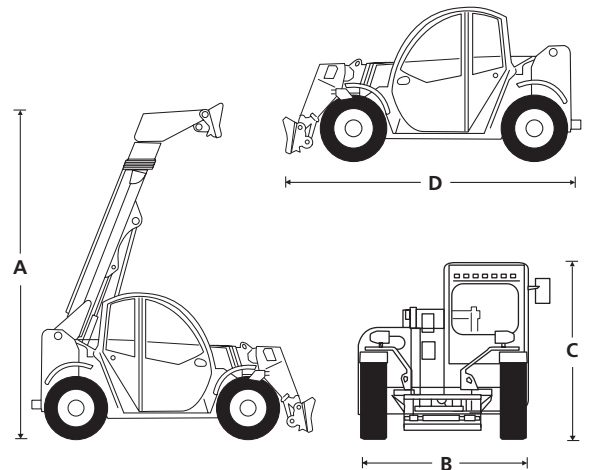
Max. drive speed	30km/h
Raise/lower time	16/10.8 sec
Frame levelling	11°
Hydraulic flow (per minute)	120L
Hydraulic pressure	230bar
Hydraulic oil capacity	150L
Fuel capacity	120L
Outside turning radius	4.2m
Tyres	445/65 - 22.5"

POWER

Power source	Deutz 55.4kW Stage V/Tier 4 Final diesel
--------------	--

WEIGHT

Weight	12,180kg
--------	----------



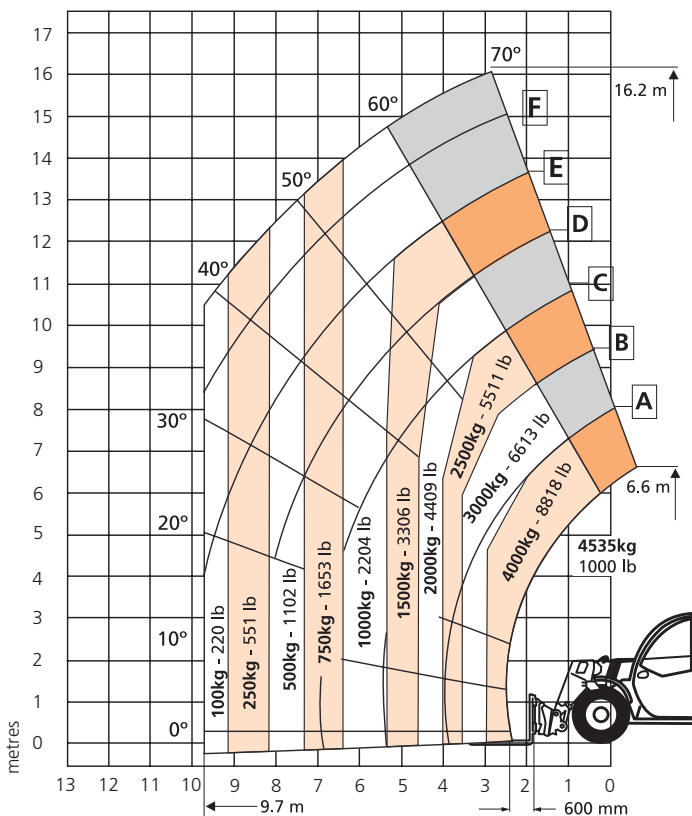
STANDARD FEATURES

- Full time 4 wheel drive
- 4 wheel steer
- Selectable front, crab & coordinated steering modes
- Auxillary hydraulic circuit on the boom
- Variable speed hydrostatic drive
- Fender (4)
- Fully enclosed cab
- Proportional joystick controls
- Adjustable steering column
- Illuminated gauge & switch panels
- Colour LCD display with machine & engine diagnostics
- Flashing beacon
- Road lights
- Block heater
- Work lights on boom (2)
- Constant flow
- Fixed 1.5m carriage
- 1.5m forks
- 2 year parts & labour, 5 year structural warranty
- CE approved

OPTIONS

- Special paint colours
- Front and rear LED work lights
- Air conditioning
- Adjustable suspension seat

LOAD CHART



snorkel www.snorkellifts.com

Vigo Centre, Birtley Road,
Washington, Tyne & Wear,
NE38 9DA, U.K.

t: +44 (0) 845 1550 057
e: sales.emea@snorkellifts.com